

Filling Instructions

for Plastic Disposables

Th001



CCELL[®]
OFFICIAL DISTRIBUTOR

Filling Instructions

1.

Insert a blunt tipped needle in the crescent-shaped opening and fill with 0.5ml of oil.

- Cartridge must be **upright** when filling the reservoir with oil.
- **Do not** overfill or allow oil to enter the center way.

2.

Immediately after filling, insert and press fit the mouthpiece until it is fully sealed.

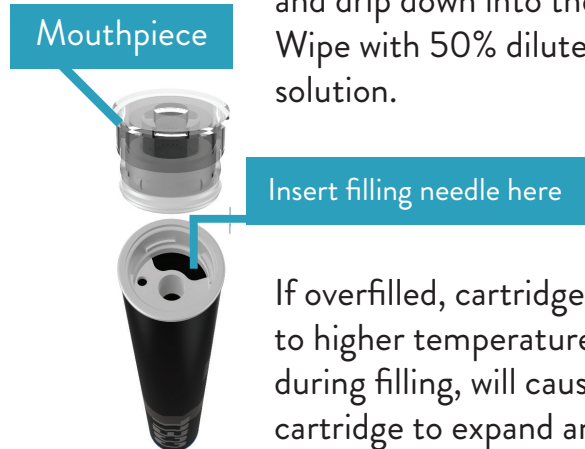
- Failure to insert the mouthpiece immediately may cause leakage.

Usage

Please wait at least **30 minutes** before using to allow the atomizer to saturate for the best vapor production.

Caution

If overfilled when press fitting the mouthpiece, oil will overflow and drip down into the cartridge. Wipe with 50% diluted alcohol solution.



If overfilled, cartridges exposed to higher temperatures than during filling, will cause oil in cartridge to expand and leak.

Warranty on all cartridges are void if filling instructions are not followed.



Visit www.kushsupplyco.com/vape-support

or call **888.920.5874** to learn more.